



# My Talking LapPup™

Learning fun with a lively puppy pal!



## Parent Guide & Instructions

This guide contains important information. Please keep it for future reference.



## Share the Learning

Visit [leapfrog.com/learningpath](http://leapfrog.com/learningpath)  
to see the skills your child is  
exploring during play.



Share your special learning moments!  
Like us at [facebook.com/leapfrog](http://facebook.com/leapfrog)

The LeapFrog® Learning Path is not available in all countries.

**Register your product online!**

You can also sign up to receive learning  
progress updates, articles, product news and  
special offers from LeapFrog.

**[leapfrog.com](http://leapfrog.com)**

## Take along the learning fun with Scout & Friends!

### Get ready for school!

Scout & Friends toys help children build essential preschool and kindergarten skills while encouraging pretend play anytime, anywhere!



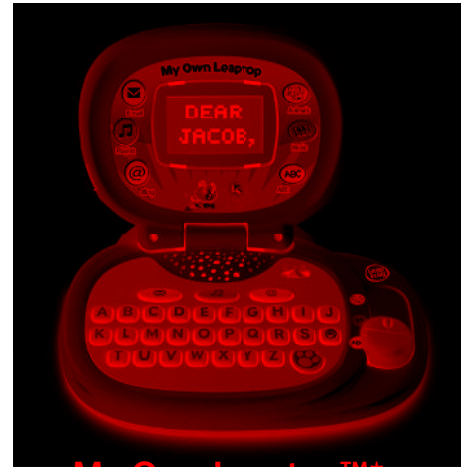
**Learn & Groove®  
Music Player\***  
18+ months



**Chat & Count\***  
18+ months



**My Own  
Story Time Pad\***  
2+ years



**My Own Leaptop™\***  
2+ years



**Scribble & Write\***  
3+ years



**Count & Draw\***  
3+ years

\*Products sold separately, and may not be available in all countries. Actual products may vary.

## Learning Skills

### 40+ fun learning activities and songs for baby to explore!

#### Pretend Play

My Talking LapPup lets children exercise their creativity through pretend laptop play!

#### The Alphabet

Listening and singing along to the *Alphabet Song* with puppy pal Scout or Violet gives children exposure to letters and helps provide a foundation for language and literacy development in preschool and kindergarten.

#### Preschool Building Blocks

As children press the buttons, they are introduced to numbers, shapes, opposites and colors/colours.

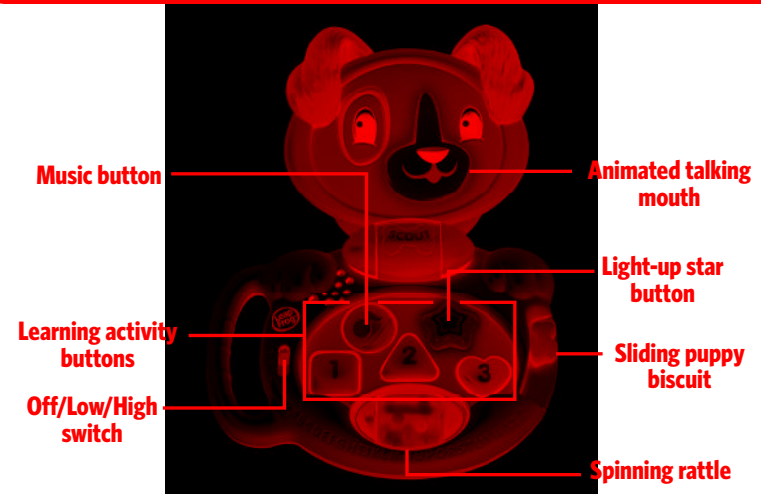
#### Peek-a-Boo Play

Children can discover an interactive peek-a-boo activity, introducing them to delightful social play!

#### Cause and Effect

As children play with the manipulatives, they learn about different ways to interact with their environment. This type of critical thinking is important for developing logic skills.

## Instructions for Play



#### Getting Started

To turn on MY TALKING LAPPUP™, slide the volume switch to the desired volume setting. To turn it off, slide the switch to OFF.

**Note:** The toy will turn off automatically after a period of inactivity. You can wake it up again by pushing a button.

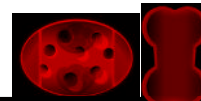
#### Play & Learning Modes

MY TALKING LAPPUP offers three ways to play!



##### Pretend "laptop" play

Press each of the 5 buttons to hear music, enjoy sing-along songs and learn about shapes, colors/colours, numbers, counting and opposites.



##### Motor skill activities

Spin the roller for rattle fun, slide the puppy biscuit back and forth and open and close the lid!



##### Peek-a-boo play

Lift and close the lid for an interactive game of peek-a-boo!

## Instructions for Care

### FOR DRY, INDOOR-LOCATION USE ONLY

Keep food and beverages away from product. Never spill liquid of any kind on this product as it may cause damage or render the device inoperative. Clean with a slightly damp cloth (cold water). Do not use soap or detergent. Never submerge the unit in water. Avoid prolonged exposure to extreme temperatures and direct sunlight. Avoid dropping the unit. Never try to dismantle it.



**CAUTION:** To be used under the direct supervision of an adult.



**ATTENTION :** Doit être utilisé sous la présence directe d'un adulte.



**CAUTION:** Routinely check this toy for proper and safe condition. If there is any damage or broken parts, remove toy from use.



**ATTENTION :** Vérifier régulièrement l'état et le fonctionnement de ce jouet afin d'en garantir la sécurité. S'il est cassé ou endommagé, même partiellement, ranger ce jouet hors de portée de votre enfant.

### Battery Information

Batteries included are for in-store demonstration and should be replaced for home use. Requires 2AA (called LR6 in some countries) alkaline batteries.

### Battery Removal and Installation Instructions

1. Open the battery door with a Phillips screwdriver.
2. If used or spent batteries are present, remove these batteries from the unit by pulling up on one end of each battery.
3. Install new batteries as shown in the polarity (+/-) diagram inside the battery compartment.
4. Replace battery door securely.

### Battery Safety

Batteries are small objects and may pose a choking hazard for small children. Batteries must be replaced by an adult. Follow the polarity (+/-) diagram in the battery compartment. Promptly remove dead batteries from the toy to avoid leaking. Dispose of used batteries properly. Remove batteries for prolonged storage. Only batteries of the same or equivalent type as recommended are to be used.

**DO NOT** incinerate used batteries.

**DO NOT** dispose of batteries in fire, as batteries may explode or leak.

**DO NOT** mix old and new batteries or types of batteries (i.e., alkaline/standard).

**DO NOT** use rechargeable batteries.

**DO NOT** recharge non-rechargeable batteries.

**DO NOT** short-circuit the supply terminals.

### Sécurité relative aux piles

Les piles sont des objets de petite taille et peuvent constituer un risque d'étranglement pour les enfants en bas âge. Le remplacement des piles doit être effectué par un adulte. Respectez le schéma de polarité (+/-) reproduit dans le compartiment des piles. Enlever rapidement les piles usagées du jouet pour éviter les fuites. Suivez les procédures adéquates pour vous débarrasser des piles usagées. Retirez les piles en cas de non-usage prolongé. Utilisez uniquement des piles ou accumulateurs du type recommandé ou d'un type équivalent.

**NE PAS** incinérer les piles usagées.

**NE PAS** jeter les piles au feu car elles peuvent exploser ou fuir.

**NE PAS** mélanger piles usagées et piles neuves, ni différents types de piles (c'est-à-dire alcalines/standard).

**NE PAS** utiliser des piles rechargeables.

**NE PAS** recharger des piles non rechargeables.

**NE PAS** court-circuiter les bornes d'alimentation.

## Troubleshooting

### Symptom

Toy does not turn on or does not respond

### Try This

- Make sure the OFF/Low/High switch is not in the OFF position
- Make sure batteries are correctly installed
- Make sure battery cover is securely attached
- Remove batteries and put them back in
- Clean battery contacts by rubbing lightly with a soft eraser and then wiping with a clean and dry cloth
- Install new batteries

Toy makes improper responses

- Follow the above instructions to clean battery contacts
- Install new batteries

## FCC Notice:

This device complies with Part 15 of the FCC rules. Operation is subject to the following two conditions:

- 1) This device may not cause harmful interference, and
- 2) This device must accept any interference received, including interference that may cause undesired operation.

**NOTE:** This equipment has been tested and found to comply with the limits for a Class B digital device, pursuant to part 15 of the FCC Rules. These limits are designed to provide reasonable protection against harmful interference in a residential installation. This equipment generates, uses and can radiate radio frequency energy and, if not installed and used in accordance with the instructions, may cause harmful interference to radio communications. However, there is no guarantee that interference will not occur in a particular installation. If this equipment does cause harmful interference to radio or television reception, which can be determined by turning the equipment off and on, the user is encouraged to try to correct the interference by one or more of the following measures:

- Reorient or relocate the receiving antenna.
- Increase the separation between the equipment and receiver.
- Consult the dealer or an experienced radio/TV technician for help.

**NOTE:** Changes or modifications to this unit not expressly approved by LeapFrog Enterprises, Inc., could void the user's authority to operate the equipment.

This Class B digital apparatus complies with Canadian ICES-003.

Cet appareil numérique de la classe B est conforme à la norme NMB-003 du Canada.

### Environmental Phenomena

- The unit may malfunction if subjected to radio-frequency interference. It should revert to normal operation when the interference stops. If not, it may become necessary to turn the power off and back on, or remove and reinstall the batteries.
- In the unlikely event of an electrostatic discharge, the unit may malfunction and lose memory, requiring the user to reset the device by removing and reinstalling the batteries.

### Impact de l'environnement

- Une défaillance de fonctionnement de l'appareil peut survenir s'il est sujet à des interférences avec les fréquences radioélectriques. Le fonctionnement normal de l'appareil devrait reprendre avec l'arrêt des interférences. Si ce n'est pas le cas, il peut s'avérer nécessaire d'éteindre et rallumer l'appareil ou de retirer et réinstaller les piles.
- Dans l'éventualité peu probable d'une décharge électrostatique, un mauvais fonctionnement et une perte de mémoire de l'appareil peuvent se produire. L'utilisateur doit alors retirer et réinstaller les piles pour réinitialiser l'appareil.

## CONSUMER SUPPORT

**U.S. Consumer Service Contact:** Visit our Consumer Support website at [www.leapfrog.com/support](http://www.leapfrog.com/support) 24 hours a day.

**Canada Consumer Service Contact:** Visit our Consumer Support website at [www.leapfrog.ca/support](http://www.leapfrog.ca/support) 24 hours a day.

**U.K. Consumer Service Contact:** Visit our Consumer Support website at [www.leapfrog.co.uk/support](http://www.leapfrog.co.uk/support) 24 hours a day.

**Australia Consumer Service Contact:** Please submit questions to our support staff via email at [info@funfastic.com.au](mailto:info@funfastic.com.au).

For information on how this product might be recycled, visit [www.leapfrog.com/recycle](http://www.leapfrog.com/recycle) or call (800) 701-5327.

**LIMITED WARRANTY:** Subject to a limited three (3) month warranty. Visit our website at [www.leapfrog.com](http://www.leapfrog.com) for full details of the warranty provided in your country. LeapFrog shall not be liable for any incidental or consequential damages for the breach of any warranty on this product. Some jurisdictions do not allow the exclusion or limitation of incidental or consequential damages, or limitation on how long an implied warranty lasts, so the above limitations or exclusions may not apply to you.

**GARANTIE LIMITÉE :** Ce produit est soumis à une garantie limitée de trois (3) mois. Veuillez consulter notre site Web à l'adresse [www.leapfrog.com](http://www.leapfrog.com) pour obtenir l'intégralité des informations de garantie fournies dans votre pays. LeapFrog ne sera pas tenu responsable des dommages consécutifs ou indirects induits par la violation de toute garantie sur ce produit. Certaines juridictions n'autorisent pas l'exclusion ou la limitation des dommages consécutifs ou indirects, ni même la limitation de la durée des garanties implicites, il est donc possible que les limitations ou exclusions ci-dessus ne s'appliquent pas à votre cas.

TM & © 2012 LeapFrog Enterprises, Inc. All rights reserved.

### leapfrog.com

For ages 6-24 months. Convient aux enfants de 6 à 24 mois.

Item number: 19197 / 19198

Part number: 605-11825-A