



**Leap  
Builders®**

**Food Fun  
Family Farm™**



## **Parent's Guide**

This guide contains important information. Please keep it for future reference.

91-003686-000 US

# INTRODUCTION

Thank you for purchasing the **LeapBuilders® Food Fun Family Farm™** set.

This interactive farm building set comes with 15 double-sided learning blocks and 35 building pieces, including an electronic Smart Star™ cube. Insert the learning blocks into the interactive Smart Star™ cube to learn about animals, foods and colors. Inspire open-ended creativity and stacking fun with all the pieces.

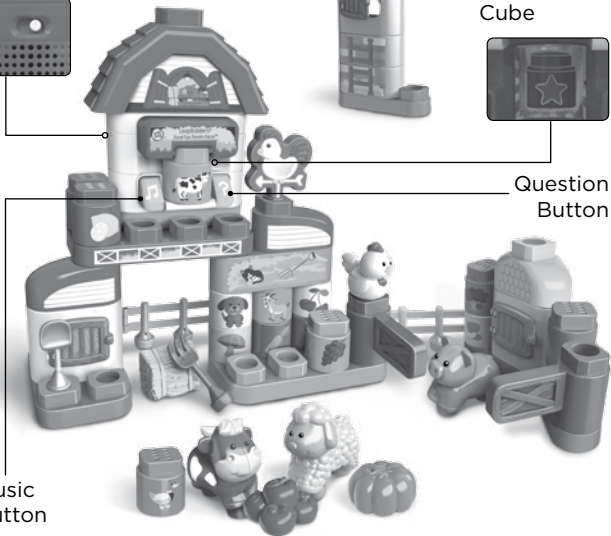
On/Off/Volume  
Control Switch



Smart Star™  
Cube



Question  
Button



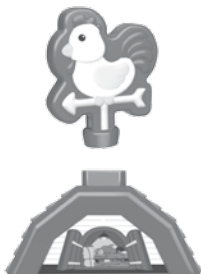
Music  
Button

# INCLUDED IN THIS PACKAGE

- One Interactive Smart Star™ Cube



- 34 Non-Electronic Building Pieces





- 15 Double-Sided Learning Blocks

Front



Back



Front



Back



Front



Back



- One booklet of building ideas
- One parent's guide

**WARNING:**

All packing materials such as tape, plastic sheets, packaging locks, removable tags, cable ties, cord and packaging screws are not part of this toy, and should be discarded for your child's safety.

**NOTE:**

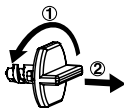
Please keep this parent's guide as it contains important information.

**ATTENTION :**

Pour la sécurité de votre enfant, débarrassez-vous de tous les produits d'emballage tels que rubans adhésifs, feuilles de plastique, attaches, étiquettes et vis d'emballage. Ils ne font pas partie du jouet.

**NOTE :**

Il est conseillé de conserver ce guide des parents car il comporte des informations importantes.

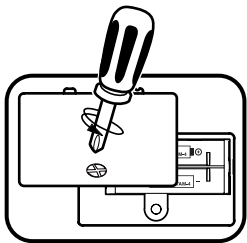
**Unlock the packaging locks:**

- ① Rotate the packaging lock 90 degrees counterclockwise.
- ② Pull out the packaging lock and discard.

# GETTING STARTED

## BATTERY INSTALLATION

1. Make sure the unit is turned **OFF**.
2. Locate the battery cover on the back of the unit. Use a screwdriver to loosen the screw.
3. Install 2 new AAA batteries following the diagram inside the battery box. (The use of new alkaline batteries is recommended for maximum performance.)
4. Replace the battery cover and tighten the screw to secure.



## BATTERY NOTICE

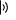


- Use new alkaline batteries for maximum performance.
- Use only batteries of the same or equivalent type as recommended.
- Do not mix different types of batteries: alkaline, standard (carbon-zinc) or rechargeable, or new and used batteries.
- Do not use damaged batteries.
- Insert batteries with the correct polarity.
- Do not short-circuit the battery terminals.
- Remove exhausted batteries from the toy.
- Remove batteries during long periods of non-use.
- Do not dispose of batteries in fire.
- Do not charge non-rechargeable batteries.
- Remove rechargeable batteries from the toy before charging (if removable).
- Rechargeable batteries are only to be charged under adult supervision.

## MISE EN GARDE

- Utiliser des piles alcalines neuves pour des performances maximales.
- Seules des piles du type recommandé doivent être utilisées.
- Ne pas mélanger différents types de piles ou d'accumulateurs, ne pas mélanger des piles ou des accumulateurs neufs avec des usagés.
- Ne pas utiliser des piles ou des accumulateurs endommagés.
- Mettre en place les piles ou les accumulateurs en respectant les polarités + et -.
- Ne pas mettre les bornes d'une pile ou d'un accumulateur en court-circuit (en reliant directement le + et le -).
- Enlever les piles ou les accumulateurs usagés du jouet.
- Retirer les piles ou les accumulateurs en cas de non-utilisation prolongée.
- Ne les jeter ni au feu ni dans la nature.
- Ne pas tenter de recharger des piles non rechargeables.
- Enlever les accumulateurs du jouet pour les recharger.
- Les accumulateurs ne doivent être chargés que sous la surveillance d'un adulte.

## PRODUCT FEATURES

### 1. On/Off/Volume Control Switch

To turn the unit **On**, slide the **On/Off/Volume Control Switch** to the **Low Volume**  or **High Volume**  position. To turn the unit **Off**, slide the **On/Off/Volume Control Switch** to the **Off**  position.





## 2. Automatic Shut Off

To preserve battery life, the **LeapBuilders® Food Fun Family Farm™** set will automatically shut off after approximately 90 seconds without input. The unit can be turned on again by pressing any button or by inserting a **Learning Block** into the interactive **Smart Star™ Cube**.

**NOTE:** This product is in Try-Me mode in the packaging. After opening the package, turn the product off and on again to proceed with normal play. If the unit powers down while playing, please install a new set of batteries.

## ACTIVITIES

### 1. Music Button

Press the **Music Button** to hear short tunes and sing-along songs about the farm. The lights will flash with the sounds.



### 2. Question Button

Press the **Question Button** to hear interactive questions and short tunes. The lights will flash with the sounds.



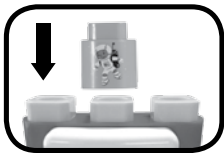
### 3. Smart Star™ Cube

Insert the double-sided **Learning Blocks** into the interactive **Smart Star™ Cube** to learn about animals, foods and colors. The lights will flash with the sounds.



### 4. Stacking Fun

Stack the blocks onto the electronic **Smart Star™ Cube** to hear fun sound effects, phrases and short tunes.



### 5. Mix and Match

For added fun, the **LeapBuilders® Food Fun Family Farm™** set interacts with the blocks from other LeapBuilders® sets. Simply put a **Learning Block** from another LeapBuilders® set into the interactive **Smart Star™ Cube** to see flashing lights and hear learning phrases and short tunes (additional sets sold separately). Please note, blocks from sets in different languages have unique audio responses and cannot be used interchangeably.

## SING-ALONG SONG LYRICS

### Song 1

The animals are on the farm.  
With LeapBuilders.  
Stacking blocks to build a barn.  
We're learning with LeapBuilders now, yeah!

## **Song 2**

All the animals on the farm are here to play.  
What shall we build today?  
The cow goes moo, she loves her hay.  
Chicken says bawk when she lays an egg.  
What shall we build today?  
All the animals on the farm are here to play.  
What shall we build today?  
Hooray.

## **Song 3**

Look at all the food on the farm! Where does it come from?  
The chicken gives us eggs, the cow gives us milk and cheese.  
Put a seed in the ground and soon you'll have carrots and tomatoes.  
All the food on the farm!

## **Song 4**

Grow some food, then feed the animals.  
We work all day and then we play, on our farm!

# **CARE & MAINTENANCE**

1. Keep the unit clean by wiping it with a slightly damp cloth.
2. Keep the unit out of direct sunlight and away from any direct heat source.
3. Remove the batteries when the unit will not be in use for an extended period of time.
4. Do not drop the unit on hard surfaces and do not expose the unit to moisture or water.

# TROUBLESHOOTING

If for some reason the unit stops working or malfunctions, please follow these steps:

1. Please turn the unit **OFF**.
2. Interrupt the power supply by removing the batteries.
3. Let the unit stand for a few minutes, then replace the batteries.
4. Turn the unit **ON**. The unit will now be ready to use again.
5. If the unit still does not work, install a brand new set of batteries.

## **IMPORTANT NOTE:**

If the problem persists, please call our Consumer Services Department at **1-800-701-5327** in the U.S. or email support@leapfrog.com. Creating and developing LeapFrog® products is accompanied by a responsibility that we take very seriously. We make every effort to ensure the accuracy of the information, which forms the value of our products. However, errors sometimes can occur. It is important for you to know that we stand behind our products and encourage you to contact us with any problems and/or suggestions you might have. A service representative will be happy to help you.

## Environmental phenomena

The unit may malfunction if subjected to radio-frequency interference. It should revert to normal operation when the interference stops. If not, it may become necessary to turn the power **OFF** and back **ON**, or remove and reinstall the batteries. In the unlikely event of an electrostatic discharge, the unit may malfunction and lose memory, requiring the user to reset the device by removing and reinstalling the batteries.

## Impact de l'environnement

Une défaillance de fonctionnement de l'appareil peut survenir s'il est sujet à des interférences avec les fréquences radioélectriques. Le fonctionnement normal de l'appareil devrait reprendre avec l'arrêt des interférences. Si ce n'est pas le cas, il peut s'avérer nécessaire d'éteindre et rallumer l'appareil ou de retirer et réinstaller les piles. Dans l'éventualité peu probable d'une décharge électrostatique, un mauvais fonctionnement et une perte de mémoire de l'appareil peuvent se produire. L'utilisateur doit alors retirer et réinstaller les piles pour réinitialiser l'appareil.

### NOTE:

This equipment has been tested and found to comply with the limits for a Class B digital device, pursuant to Part 15 of the FCC Rules. These limits are designed to provide reasonable protection against harmful interference in a residential installation. This equipment generates, uses and can radiate radio frequency energy and, if not installed and used in accordance with the instructions, may cause harmful interference to radio communications. However, there is no guarantee that interference will not occur in a particular installation. If this equipment does cause harmful interference to radio or television reception, which can be determined by turning the equipment off and on, the user is encouraged to try to correct the interference by one or more of the following measures:

- Reorient or relocate the receiving antenna.
- Increase the separation between the equipment and receiver.
- Connect the equipment into an outlet on a circuit different from that to which the receiver is connected.
- Consult the dealer or an experienced radio/TV technician for help.

### Supplier's Declaration of Conformity

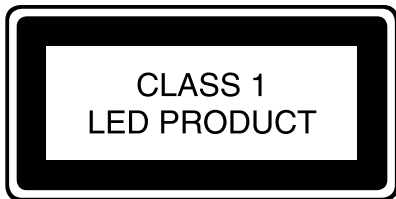
Trade Name: LeapFrog®  
Model: 6069  
Product Name: LeapBuilders® Food Fun Family Farm™  
Responsible Party: LeapFrog Enterprises, Inc.  
Address: 6401 Hollis Street, Suite 100,  
Emeryville, CA 94608  
Website: leapfrog.com

THIS DEVICE COMPLIES WITH PART 15 OF THE FCC RULES. OPERATION IS SUBJECT TO THE FOLLOWING TWO CONDITIONS: (1) THIS DEVICE MAY NOT CAUSE HARMFUL INTERFERENCE, AND (2) THIS DEVICE MUST ACCEPT ANY INTERFERENCE RECEIVED, INCLUDING INTERFERENCE THAT MAY CAUSE UNDESIRE OPERATION.

*CAN ICES-3 (B)/NMB-3(B)*

**Caution:** Changes or modifications not expressly approved by the party responsible for compliance could void the user's authority to operate the equipment.

***Read our complete warranty policy online at  
[leapfrog.com/warranty](http://leapfrog.com/warranty).***





***Visit our website for more  
information about our products,  
downloads, resources and more.***

***leapfrog.com***

LeapFrog Enterprises, Inc.  
A subsidiary of VTech Holdings Limited.  
TM & © 2019 LeapFrog Enterprises, Inc.

All rights reserved.  
91-003686-000 