



Tad's Fridge Phonics™

Magnetic Letter Set



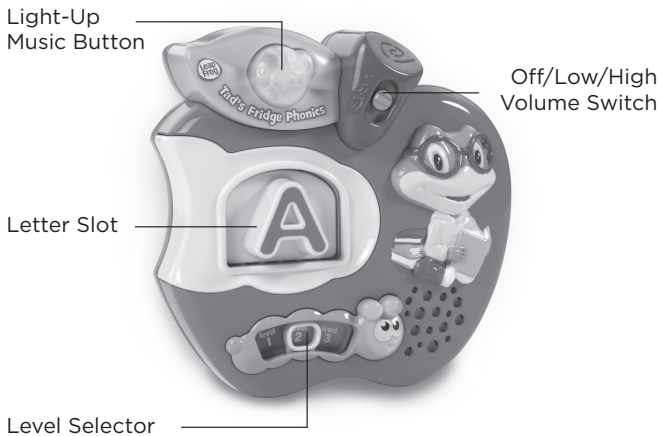
Parent's Guide

This guide contains important information. Please keep it for future reference.

91-003428-001 (US)

INTRODUCTION

Thank you for purchasing Tad's Fridge Phonics™! This interactive toy introduces your child to the letters of the alphabet as well as the sounds they make. Playing with the letter tiles also exercises your child's fine motor skills and helps them develop a sense of the shape of each letter. Three photo frames can be customized with your own photos and images!



INCLUDED IN THIS PACKAGE

- One **Tad's Fridge Phonics™**
- 26 letter tiles
- Three photo frame tiles
- One parent's guide

WARNING:

All packing materials, such as tape, plastic sheets, packaging locks, removable tags, cable ties and packaging screws are not part of this toy, and should be discarded for your child's safety.

ATTENTION:

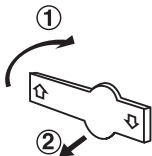
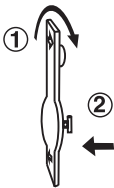
Pour la sécurité de votre enfant, débarrassez-vous de tous les produits d'emballage tels que rubans adhésifs, feuilles de plastique, attaches, étiquettes et vis d'emballage. Ils ne font pas partie du jouet.

NOTE:

Please keep this parent's guide as it contains important information.

Unlock the packaging locks:

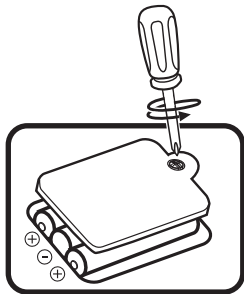
- ① Rotate the packaging locks 90 degrees clockwise.
- ② Pull out the packaging locks and discard.



GETTING STARTED

BATTERY INSTALLATION

1. Make sure the unit is turned **OFF**.
2. Locate the battery cover on the bottom of the unit.
3. Use a screwdriver to loosen the screw and open the battery cover.
4. Install 3 new AAA (AM-4/LR03) batteries into the battery box as illustrated. (The use of new alkaline batteries is recommended for maximum performance.)
5. Replace the battery cover and tighten the screw to secure.



BATTERY NOTICE

- Use new alkaline batteries for maximum performance.
- Use only batteries of the same or equivalent type as recommended.
- Do not mix different types of batteries: alkaline, standard (carbon-zinc) or rechargeable (Ni-Cd, Ni-MH), or new and used batteries.
- Do not use damaged batteries.
- Insert batteries with the correct polarity.
- Do not short-circuit the battery terminals.
- Remove exhausted batteries from the toy.
- Remove batteries during long periods of non-use.
- Do not dispose of batteries in fire.
- Do not charge non-rechargeable batteries.
- Remove rechargeable batteries from the toy before charging (if removable).
- Rechargeable batteries are only to be charged under adult supervision.

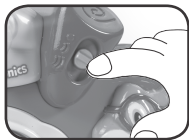
MISE EN GARDE

- Utilisez de nouvelles piles alcalines pour une performance maximale.
- Seules des piles du type recommandé doivent être utilisées.
- Ne pas mélanger différents types de piles ou d'accumulateurs, ne pas mélanger des piles ou des accumulateurs neufs avec des usagés.
- Ne pas utiliser des piles ou des accumulateurs endommagés.
- Mettre en place les piles ou les accumulateurs en respectant les polarités + et -.
- Ne pas mettre les bornes d'une pile ou d'un accumulateur en court-circuit (en reliant directement le + et le -).
- Enlever les piles ou les accumulateurs usagés du jouet.
- Retirer les piles ou les accumulateurs en cas de non-utilisation prolongée.
- Ne les jeter ni au feu ni dans la nature.
- Ne pas tenter de recharger des piles non rechargeables.
- Enlever les accumulateurs du jouet pour les recharger.
- Les accumulateurs ne doivent être chargés que sous la surveillance d'un adulte.

PRODUCT FEATURES

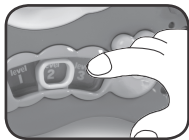
1. Off/Low/High Volume Switch

Slide the **Off/Low/High Volume Switch** from the Off position to Low or High volume to play.



2. Level Selector

- Select Level 1 to hear the letter name
- Select Level 2 to hear the letter name, a word that begins with that letter and a fun alliterative phrase starting with that letter
- Select Level 3 to hear a phonics song featuring the letter name and letter sound



3. Light-Up Music Button

Press the **Light-Up Music Button** to hear two songs that reinforce alphabet learning and phonics skills.



4. 26 Letter Tiles

Place a **Letter Tile** into the **Letter Slot** and press down to hear the letter name, letter sound, a phonics song, and words that start with that letter.



5. Three Photo Frame Tiles

Insert your own photos or images into the **Photo Frame Tiles**. Then place these tiles into the **Letter Slot** to hear phrases such as, "Rock Star Daddy!" and "Super Sweet Mama!"



CARE & MAINTENANCE

1. Keep the unit clean by wiping it with a slightly damp cloth.
2. Keep the unit out of direct sunlight and away from any direct heat sources.
3. Remove the batteries when the unit is not in use for an extended period of time.
4. Do not drop the unit on a hard surface and do not expose the unit to excess moisture.

TROUBLESHOOTING

If for some reason the program/activity stops working, please follow these steps:

1. Turn the unit **OFF**.
2. Interrupt the power supply by removing the batteries.
3. Let the unit stand for a few minutes, then replace the batteries.
4. Turn the unit back **ON**. The unit will now be ready to play again.
5. If the unit still does not work, replace with an entire set of new batteries.

Environmental phenomena.

The unit may malfunction if subjected to radio-frequency interference. It should revert to normal operation when the interference stops. If not, it may become necessary to turn the power **OFF** and back **ON**, or remove and reinstall the batteries. In the unlikely event of an electrostatic discharge, the unit may malfunction and lose memory, requiring the user to reset the device by removing and reinstalling the batteries.

Impact de l'environnement.


Une défaillance de fonctionnement de l'appareil peut survenir s'il est sujet à des interférences avec les fréquences radioélectriques. Le fonctionnement normal de l'appareil devrait reprendre avec l'arrêt des interférences. Si ce n'est pas le cas, il peut s'avérer nécessaire d'éteindre et rallumer l'appareil ou de retirer et réinstaller les piles. Dans l'éventualité peu probable d'une décharge électrostatique, un mauvais fonctionnement et une perte de mémoire de l'appareil peuvent se produire. L'utilisateur doit alors retirer et réinstaller les piles pour réinitialiser l'appareil.


NOTE:


This equipment has been tested and found to comply with the limits for a Class B digital device, pursuant to Part 15 of the FCC Rules. These limits are designed to provide reasonable protection against harmful interference in a residential installation. This equipment generates, uses and can radiate radio frequency energy and, if not installed and used in accordance with the instructions, may cause harmful interference to radio communications. However, there is no guarantee that interference will not occur in a particular installation. If this equipment does cause harmful interference to radio or television reception, which can be determined by turning the equipment off and on, the user is encouraged to try to correct the interference by one or more of the following measures:

- Reorient or relocate the receiving antenna.
- Increase the separation between the equipment and receiver.
- Connect the equipment into an outlet on a circuit different from that to which the receiver is connected.
- Consult the dealer or an experienced radio/TV technician for help.


Caution: Changes or modifications not expressly approved by the party responsible for compliance could void the user's authority to operate the equipment.

 **WARNING:** This product contains inaccessible magnets. Should the toy break or magnets ever become exposed, remove the toy from use. Magnets should not be eaten or inhaled. Swallowed magnets can stick together across intestines causing serious infections and death. Seek immediate medical attention if magnets are swallowed or inhaled.

 **AVERTISSEMENT:** Les aimants contenus dans ce produit sont hors d'atteinte des enfants. Confisquer ce jouet s'il vient à se briser ou si un contact avec les aimants devient possible. Un aimant n'est pas fait pour être mangé ou inhalé. L'ingestion d'au moins deux aimants qui peuvent s'attirer mutuellement dans les intestins risque de provoquer des infections intestinales pouvant s'avérer mortelles. En cas d'ingestion ou d'inhalation, contactez de toute urgence votre médecin.

 **CAUTION:** This product contains strong magnets. Keep product 6" (15 cm) away from pacemakers, and avoid contact with:

- Magnetic computer media, including floppy disks, zip disks, removable hard disk drives.
- Televisions and computer video monitors.
- Magnetic media, including audio cassette tapes, video cassette tapes, credit cards, ID badges, etc.
- Audio tape recorders.
- Iron filings and other ferrous-metal shavings/particles.
- Pointed objects of ferrous material, such as nails, screws, carpet tacks, etc.
- May scratch painted or magnetic surfaces.

 **ATTENTION:** Ce produit contient des aimants puissants. Gardez-le à une distance minimum de 6 pouces (15 cm) d'un stimulateur cardiaque et évitez tout contact avec :

- les supports informatiques magnétiques tels que disquettes, disques Zip, disques durs amovibles
- les postes de télévision et écrans vidéo d'ordinateur
- les autres supports magnétiques tels que cassettes audio, cassettes vidéo
- cartes de crédit, badges d'identité, etc.
- les magnétophones
- la limaille de fer et autres ébarbures/particules de métaux ferreux
- les objets pointus en matériaux ferreux tels que clous, vis, punaises, etc.
- peut rayer les surfaces peintes ou magnétiques

IMPORTANT NOTE:

If the problem persists, please call our Consumer Services Department at **1-800-701-5327** in the U.S. or email support@leapfrog.com. Creating and developing LeapFrog® products is accompanied by a responsibility that we take very seriously. We make every effort to ensure the accuracy of the information, which forms the value of our products. However, errors sometimes can occur. It is important for you to know that we stand behind our products and encourage you to contact us with any problems and/or suggestions you might have. A service representative will be happy to help you.

THIS DEVICE COMPLIES WITH PART 15 OF THE FCC RULES. OPERATION IS SUBJECT TO THE FOLLOWING TWO CONDITIONS: (1) THIS DEVICE MAY NOT CAUSE HARMFUL INTERFERENCE, AND (2) THIS DEVICE MUST ACCEPT ANY INTERFERENCE RECEIVED, INCLUDING INTERFERENCE THAT MAY CAUSE UNDESIRED OPERATION.

CAN ICES-3 (B)/NMB-3(B)

**CLASS 1
LED PRODUCT**



***Visit our website for more
information about our products,
downloads, resources and more.***

leapfrog.com

***For warranty information, please visit
leapfrog.com/warranty.***

LeapFrog Enterprises, Inc.,
a subsidiary of VTech Holdings Limited.
TM & © 2018 LeapFrog Enterprises, Inc.
All rights reserved.
91-003428-001 (US)

Use this template to cut your own photos to the correct size for the photo frames.

