



# Channel Fun Learning Remote™

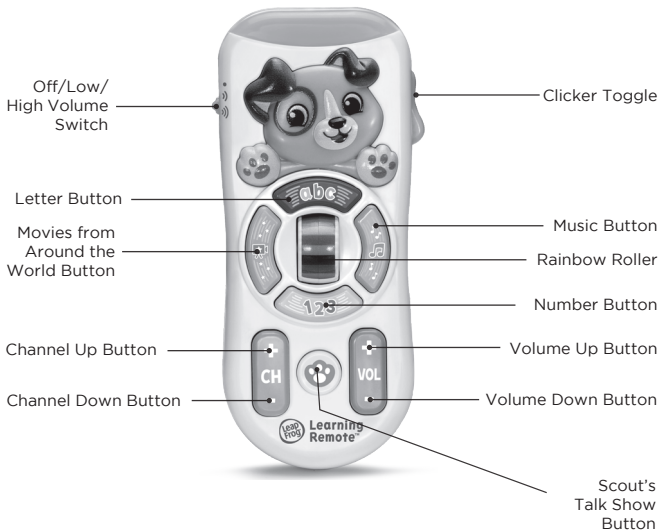


## Instruction Manual

This manual contains important information. Please save it for future reference.

# INTRODUCTION

Thank you for purchasing the **Channel Fun Learning Remote™** With this remote, there's learning on every channel!



# INCLUDED IN THE PACKAGE

- One **Channel Fun Learning Remote™**
- Quick Start Guide

## WARNING

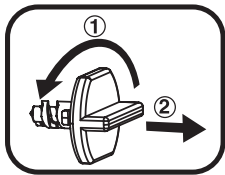
All packing materials such as tape, plastic sheets, packaging locks, removable tags, cable ties, cords and packaging screws are not part of this toy, and should be discarded for your child's safety.

## NOTE

Please save this Instruction Manual as it contains important information.

## Unlock the Packaging Locks:

- ① Rotate the packaging lock anticlockwise several times.
- ② Pull out the packaging lock and discard.



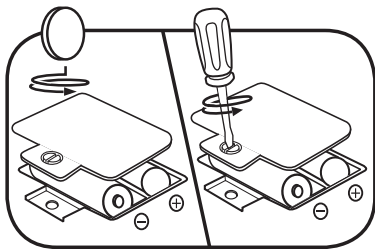
# INSTRUCTIONS

## BATTERY REMOVAL AND INSTALLATION

1. Make sure the unit is turned **OFF**.
2. Locate the battery cover on the back of the unit. Use a screwdriver to loosen the screw and then open the battery cover.
3. If used batteries are present, remove these batteries from the unit by pulling up on one end of each battery.
4. Install 2 new AAA (AM-4/LR03) batteries following the diagram inside the battery box. (For best performance, alkaline batteries or fully charged Ni-MH rechargeable batteries are recommended.)
5. Replace the battery cover and tighten the screw to secure.

### **WARNING:**

Adult assembly required for battery installation.  
Keep batteries out of reach of children.



## **IMPORTANT: BATTERY INFORMATION**

- Insert batteries with the correct polarity (+ and -).
- Do not mix old and new batteries.
- Do not mix alkaline, standard (carbon-zinc) or rechargeable batteries.
- Only batteries of the same or equivalent type as recommended are to be used.
- Do not short-circuit the supply terminals.
- Remove batteries during long periods of non-use.
- Remove exhausted batteries from the toy.
- Dispose of batteries safely. Do not dispose of batteries in fire.

## **RECHARGEABLE BATTERIES**

- Remove rechargeable batteries (if removable) from the toy before charging.
- Rechargeable batteries are only to be charged under adult supervision.
- Do not charge non-rechargeable batteries.

## Disposal of batteries and product



The crossed-out wheeled bin symbols on products and batteries, or on their respective packaging, indicates they must not be disposed of in domestic waste as they contain substances that can be damaging to the environment and human health.



The chemical symbols Hg, Cd or Pb, where marked, indicate that the battery contains more than the specified value of mercury (Hg), cadmium (Cd) or lead (Pb) set out in the Batteries and Accumulators Regulation.

The solid bar indicates that the product was placed on the market after 13th August, 2005.

 Please dispose of your product and batteries responsibly.

In the UK, give this toy a second life by disposing of it at a small electricals collection point\* so all of its materials can be recycled.

Learn more at:

[www.leapfrog.co.uk/recycle](http://www.leapfrog.co.uk/recycle)

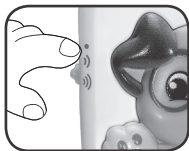
[www.leapfrog.com.au/recycle](http://www.leapfrog.com.au/recycle)

\* Visit [www.recyclenow.com](http://www.recyclenow.com) to see a list of collection points near you.

# PRODUCT FEATURES

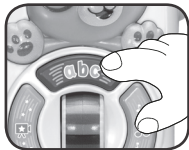
## 1. Off/Low/High Volume Switch

Slide the **Off/Low/High Volume Switch** to turn the toy on and to select the volume.



## 2. Letter Button

Press to hear the “Alphabet” Song and the “L-O-V-E Spells Love” Song.



## 3. Movies from Around the World Button

Press to hear pretend phrases and their translations from movies in French, Spanish and Mandarin.



## 4. Music Button

Press to listen to three styles of music and the “Let’s Watch a Movie” song.



## 5. Number Button

Press to hear the “Let’s Count!” Song and phrases that include counting forwards and backwards.



## 6. Rainbow Roller

Push up or down to play the “Slide the Rainbow” song. Try to guess the colour before it is announced!



## 7. Channel Up/Down Button

Press for pretend TV channel phrases and sounds.



## 8. Volume Up/Down Button

Press to hear voices get quieter and louder and cute animal sounds.



## 9. Scout's Talk Show Button

Press to hear fun phrases from your pal Scout!



## 10. Clicker Toggle

Press to hear non-electronic clicking sounds.





# SONG LYRICS

## Letters song

L-O-V-E spells love!

Let me show you with a hug!

## Movie song

Let's watch a movie!

Let's watch a show!

You can pick, but make it quick!

Push the buttons, come on let's go!

## Number Song

1, 2 -

3, 4 -

5, 6 -

7, 8 -

9 and 10!

It's so much fun counting with a friend!

## Rainbow Song

Slide the rainbow,

1, 2, 3!

Open your eyes,

What colour do you see?

## CARE & MAINTENANCE

1. Keep the unit clean by wiping it with a slightly damp cloth.
2. Keep the unit out of direct sunlight and away from any direct heat sources.
3. Remove the batteries if the unit will not be in use for an extended period of time.
4. Do not drop the unit on hard surfaces and do not expose the unit to moisture or water.

## TROUBLESHOOTING

If for some reason the unit stops working or malfunctions, please follow these steps:

1. Please turn the unit **Off**.
2. Interrupt the power supply by removing the batteries.
3. Let the unit stand for a few minutes, then replace the batteries.
4. Turn the unit back **On**. The unit should now be ready to use again.
5. If the unit still does not work, install a new set of batteries.

## Environmental Phenomena

The unit may malfunction if subjected to radio-frequency interference. It should revert to normal operation when the interference stops. If not, it may become necessary to turn the power **Off** and back **On**, or remove and reinstall the batteries. In the unlikely event of an electrostatic discharge, the unit may malfunction and lose memory, requiring the user to reset the device by removing and reinstalling the batteries.

# CONSUMER SERVICES

Creating and developing **LeapFrog®** products is accompanied by a responsibility that we at **LeapFrog®** take very seriously. We make every effort to ensure the accuracy of the information, which forms the value of our products. However, errors sometimes can occur. It is important for you to know that we stand behind our products and encourage you to call our Consumer Services Department with any problems and/or suggestions that you might have. A service representative will be happy to help you.

## **UK Customers:**

Phone: 01702 200244 (from UK) or +44 1702 200244 (outside UK)  
Website: [www.leapfrog.co.uk/support](http://www.leapfrog.co.uk/support)

## **Australian Customers:**

Phone: 1800 862 155  
Website: [support.leapfrog.com.au](http://support.leapfrog.com.au)

## **NZ Customers:**

Phone: 0800 400 785  
Website: [support.leapfrog.com.au](http://support.leapfrog.com.au)

# PRODUCT WARRANTY/ CONSUMER GUARANTEES

## **UK Customers:**

Read our complete warranty policy online at [leapfrog.com/warranty](http://leapfrog.com/warranty).

## **Australian Customers:**

VTECH ELECTRONICS (AUSTRALIA) PTY LIMITED -  
CONSUMER GUARANTEES

Under the Australian Consumer Law, a number of consumer guarantees apply to goods and services supplied by VTech Electronics (Australia) Pty Limited. Please refer to [leapfrog.com/en-au/legal/warranty](http://leapfrog.com/en-au/legal/warranty) for further information.



***Visit our website for more  
information about our products,  
downloads, resources and more.***

***leapfrog.com***

LeapFrog Enterprises, Inc.  
A subsidiary of VTech Holdings Limited.  
TM & © 2023 LeapFrog Enterprises, Inc.  
All rights reserved.  
IM-607700-001  
Version:0